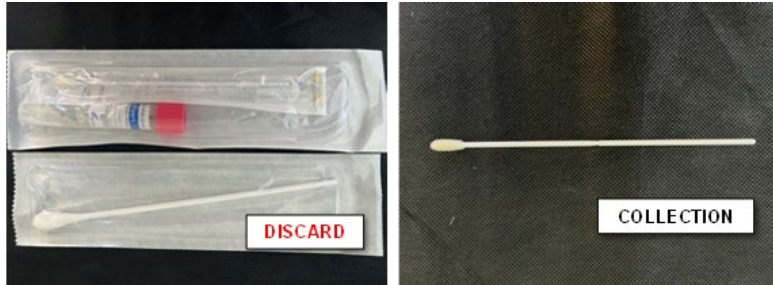


BACTERIAL VAGINOSIS, CANDIDA VAGINITIS, & TRICHOMONAS NAAT



COLLECTION:
CEPHEID XPRT

SOURCE: Vaginal

INSTRUCTIONS:

- Discard large separately packaged swab
- Collect using flocked swab packaged with collection tube (pink top)

CHLAMYDIA TRACHOMATIS/NEISSERIA GONORRHOEAE NAAT, TRICHOMONAS VAGINALIS NAAT, MYCOPLASMA GENITALIUM NAAT



COLLECTION:
COBAS® DUAL SWAB KIT
COBAS® URINE KIT (for urine only)

SOURCE:
Vaginal (patient or provider collect)
Throat (CT/NG only)
Rectal (CT/NG only)
Urine

- INSTRUCTIONS:**
- Discard the clear flocked swab
 - Collect using the **woven** swab

CHLAMYDIA TRACHOMATIS/NEISSERIA GONORRHOEAE NAAT, TRICHOMONAS VAGINALIS NAAT, MYCOPLASMA GENITALIUM NAAT



COLLECTION:
COBAS® DUAL SWAB KIT or THINPREP® (CT/NG, TV only; not pictured)

SOURCE:
Endocervical (ThinPrep also acceptable for this source)

- INSTRUCTIONS:**
- Remove mucus using the woven swab and **discard**
 - Collect using the **flocked** swab

