

**Green with gel
Lithium Heparin**

Plasma Separator

4.5 mL

Basic Metabolic Panel
Complete Metabolic Panel
Electrolyte Panel
Hepatic Function Panel
Lipid Panel

Renal Function Panel

Acetaminophen	Magnesium
Amikacin	Osmolality
Amylase	Phenobarbital
Beta-HCG	Phosphorus
BNP	Prealbumin
CA 19-9	Prolactin
Carbamazapine	PTH
CRP/hsCRP	Salicylate
CK Total	Theophylline
CK MB	Tobramycin
Ethanol	Transferrin
Ferritin	Troponin I
Folate	TSH
Free T4	Uric acid
GGT	Valproic acid
Gentamicin	Vancomycin
Growth Hormone	Vitamin B12
Iron Studies	
LDH	
Lipase	



**Yellow
Acid-Citrate-Dextrose**

8 mL

HLA testing

Alpha-galactosidase
Arylsulfatase A

This document serves as a guide only. Please visit our test catalog for more detailed collection requirements:



**Gold or Red with gel
Clot activator**

Serum Separator

5 mL

Acute Hepatitis Panel
Autoimmune Serology

(ANA, anti-DNA, anti-cardiolipin, anti-CCP, anti-mitochondrial, anti-smooth muscle, and others)

Infectious Serology

(CMV, EBV, Hep A/B/C, HIV, HSV, Mumps, RPR, Rubella, Rubeola, Syphilis, Toxoplasma, Varicella, West Nile, and others)

Alpha Feto Protein

Apolipoproteins

Beta-2-Microglobulin

C3 & C4

CA125

CA2729

CEA

Ceruloplasmin

Cortisol

Digoxin

Estradiol

FSH

Haptoglobin

HIV 1/2 Antigen/Antibody Screen

Immunoglobulins

Insulin

Kappa:Lambda Free Light Chains

LH

Lithium

PSA total & free

Quad Screen

Maternal Screen, AFP Only

Rheumatoid Factor

Serum Protein Electrophoresis

Testosterone

Thyroglobulin

Thyroid antibodies

Vitamin D, 25-hydroxy



**Purple/Pink
EDTA**

4 mL

6 mL



Purple EDTA

Complete Blood Count

Immunosuppressive Drugs

(Cyclosporin, Sirolimus, Tacrolimus)

ACTH

Blood Parasites (deliver in <1 hour)

CD34 (peripheral blood only)

ESR

Hemoglobin A1c

Hemoglobin electrophoresis

Homocysteine

Reticulocyte count

Pink EDTA

Blood Bank (Cord blood, DAT, Type & Screen, Type & Crossmatch)

HBV, HCV, HIV by PCR (quantitative, genotype, phenotype)



**Red no gel
Clot activator**

6 mL

Toxicology & Drug Levels:

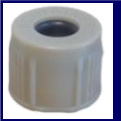
(Glycols, methotrexate, mixed alcohols, pentobarbital, etc.)

Heparin-associated antibodies

Phenytoin free and total

Progesterone

Testosterone free and total



**Gray
Oxalate
with fluoride**

6 mL

Glucose tolerance testing
Paraldehyde

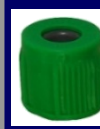


**Blue
Citrate**

2.7 mL

Coagulation Testing

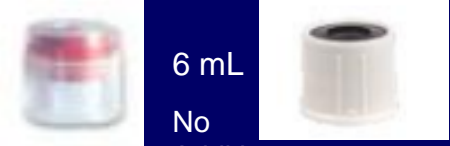
Antithrombin III activity
APC resistance
Chromogenic Xa
D-dimer
Fibrinogen
Heparin level
Lupus anticoagulant testing
Partial thromboplastin time (PTT)
Proteins C & S
Prothrombin time (PT)
Specific factor activity
Specific factor inhibitor
Thromboelastography (TEG)
Thrombin Time
Dilute Thrombin Time
Von Willebrand factor



**Green no gel
Sodium Heparin
OR
Lithium Heparin**

6 mL

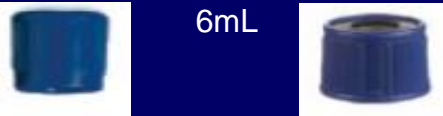
Calcium, ionized, whole blood
Carboxyhemoglobin
Lactate, whole blood, venous & arterial
Methemoglobin
Ammonia- **LITH HEP ONLY**
CD3/CD4/CD8 count
Cylex T- cell assay (Immuknow)
Leukemia & lymphoma immunophenotyping
LPA/Elispot Testing
Lymphocyte Function, Neutrophil Function
NK Cell Function Assay
Quantitative Blood Cultures (Pour Plates)



6 mL
No
Additive

Urine Pour off (sterile container)
Waist tube

Highlands Ranch Hospital



6mL

Trace Free Elements Serum / NH
Trace Elements Sodium Heparin

- Aluminum
- Arsenic
- Cadmium
- Cobalt
- Copper
- Heavy Metal
- Iodine
- Lead
- Manganese
- Mercury
- Nickel
- Selenium
- Thallium
- Zinc